



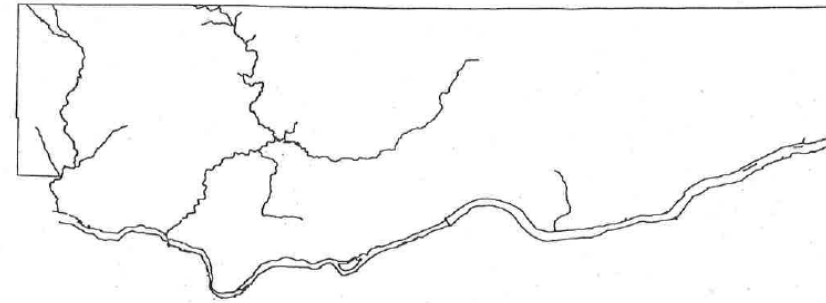
Shorelines of the State

Shorelands and Environmental
Assistance Program

Regulations

- ▶ SMA 1971
 - ▶ RCW 90.58
- ▶ WAC 173.27
- ▶ SMP
 - ▶ Jointly administered with local governments

1996 KLICKITAT COUNTY SHORELINES MASTER PLAN UPDATE



Adopted August 7, 1998

AMENDED 2007

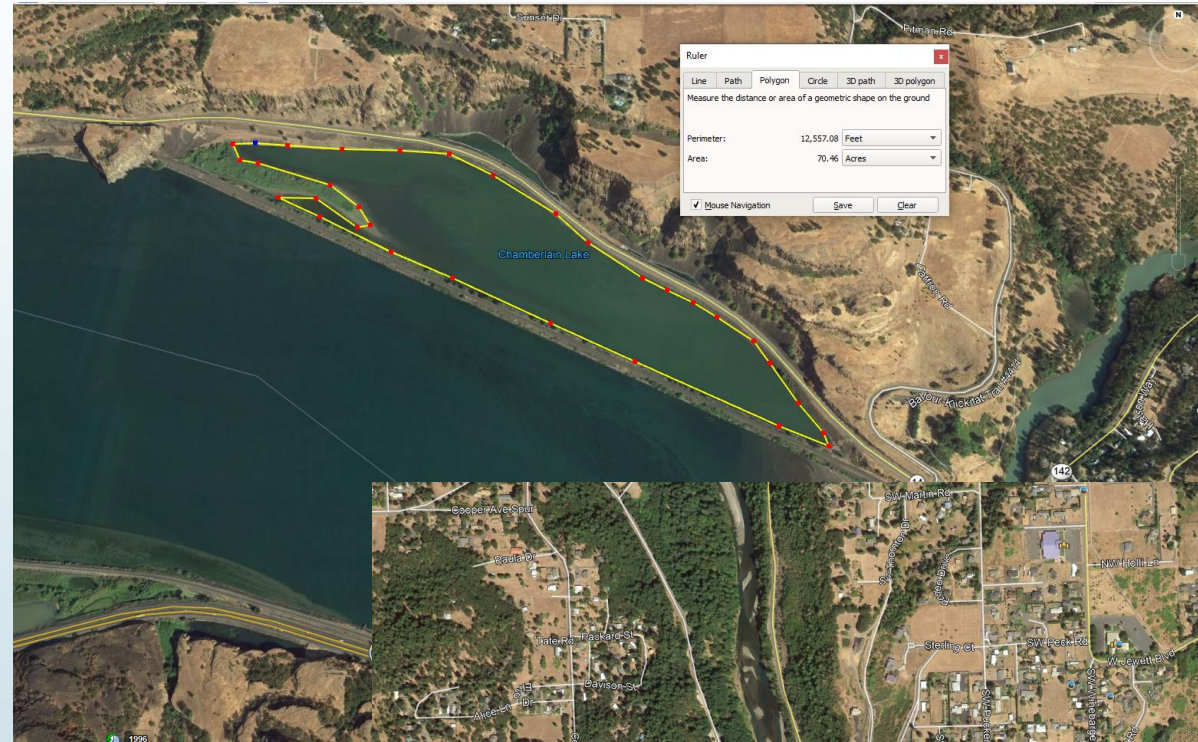
Shorelines of Klickitat County

Streams 20cfs

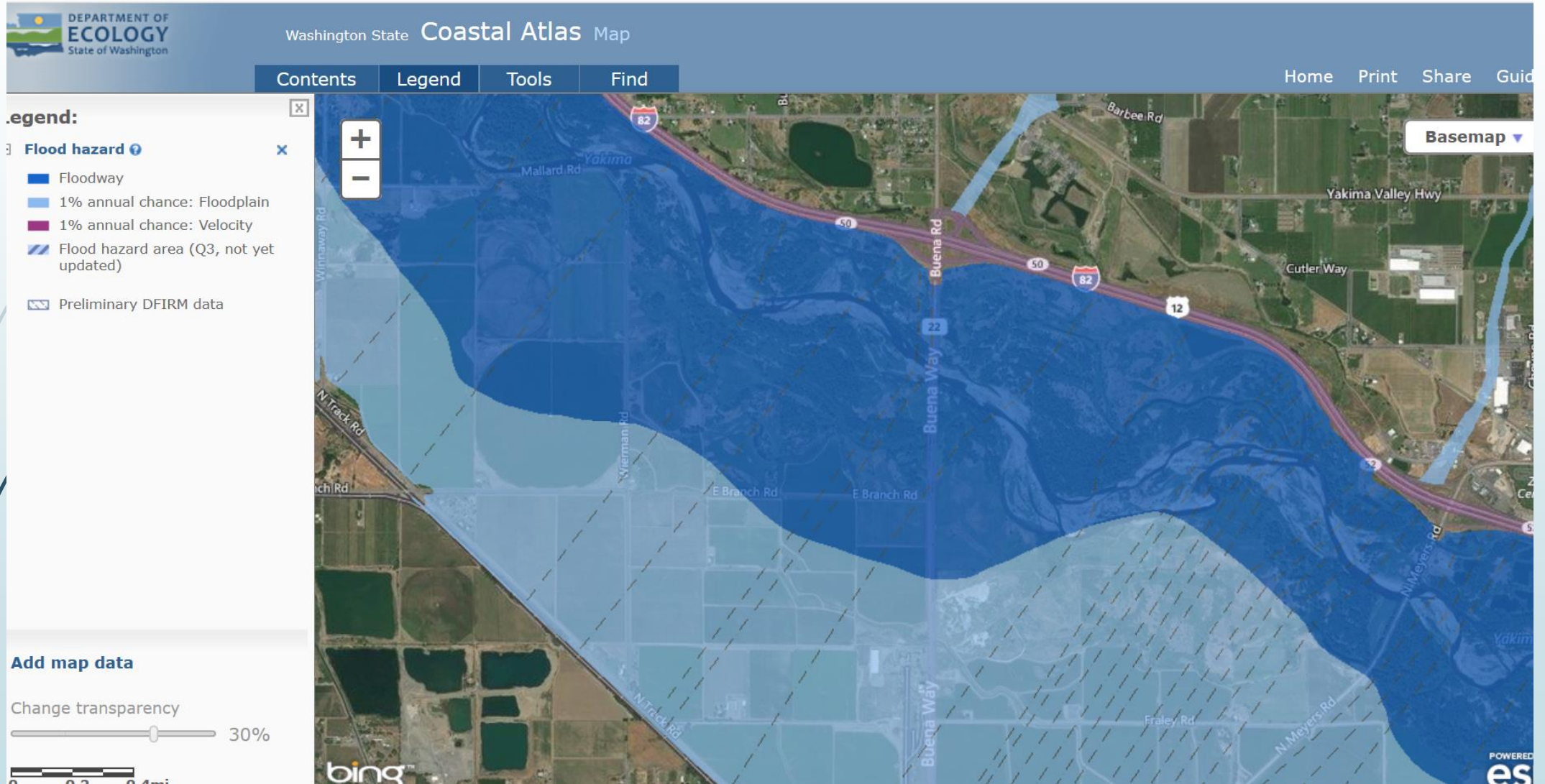
- ▶ Trout Lake Creek
- ▶ Klickitat River
- ▶ White Salmon River
- ▶ Columbia River

Lakes 20+ acres

- ▶ Spearfish Lake
- ▶ Horsethief Lake
- ▶ Chamberlain Lake
- ▶ Rowland Lake
- ▶ Locke Lake
- ▶ Carp Lake



Jurisdiction



Jurisdiction

The screenshot displays the Washington State Coastal Atlas Map interface. At the top left is the logo for the DEPARTMENT OF ECOLOGY, State of Washington. The main title is "Washington State Coastal Atlas Map". Navigation tabs include "Contents", "Legend", "Tools", and "Find". On the right side, there are links for "Home", "Print", "Share", and "Guide".

The "Legend" panel on the left lists the following items:

- Flood hazard** (with a close button 'x')
- Floodway** (represented by a solid blue square)
- 1% annual chance: Floodplain** (represented by a light blue square)
- 1% annual chance: Velocity** (represented by a purple square)
- Flood hazard area (Q3, not yet updated)** (represented by a blue hatched square)
- Preliminary DFIRM data** (represented by a square with a wavy pattern)

The main map area shows a satellite view of a river valley. A large area along the Klickitat River is overlaid with a blue hatched pattern, indicating a flood hazard area. Other roads shown include Fisher Hill Rd, Spence Frey Rd, and Highway 142. A "Basemap" dropdown menu is visible in the top right corner of the map area. A scale bar at the bottom left shows 0, 300, and 600 feet. The map is powered by Esri, as indicated by the logo in the bottom right corner.

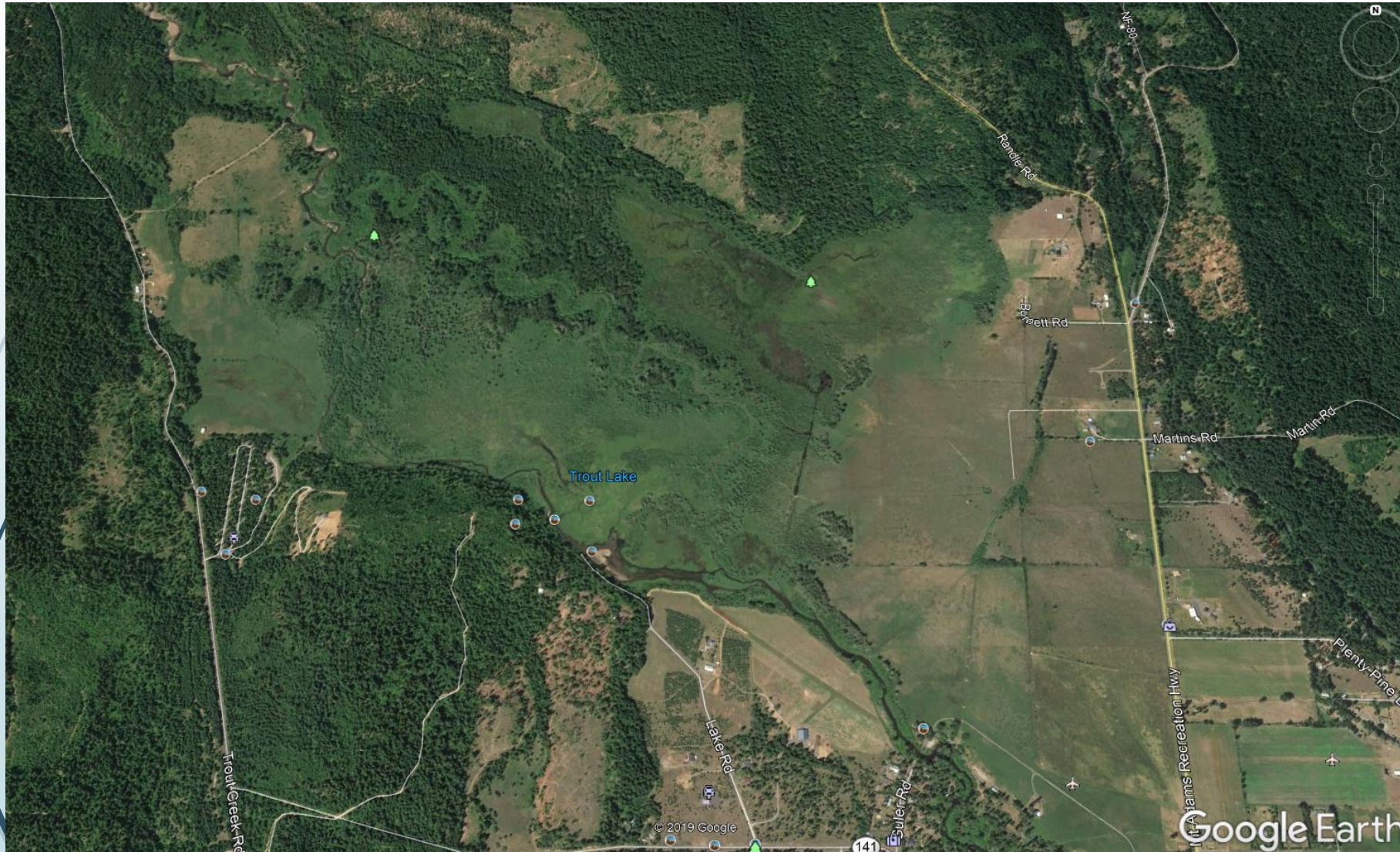
Buffer



Shoreline Environments



Shoreline Environments



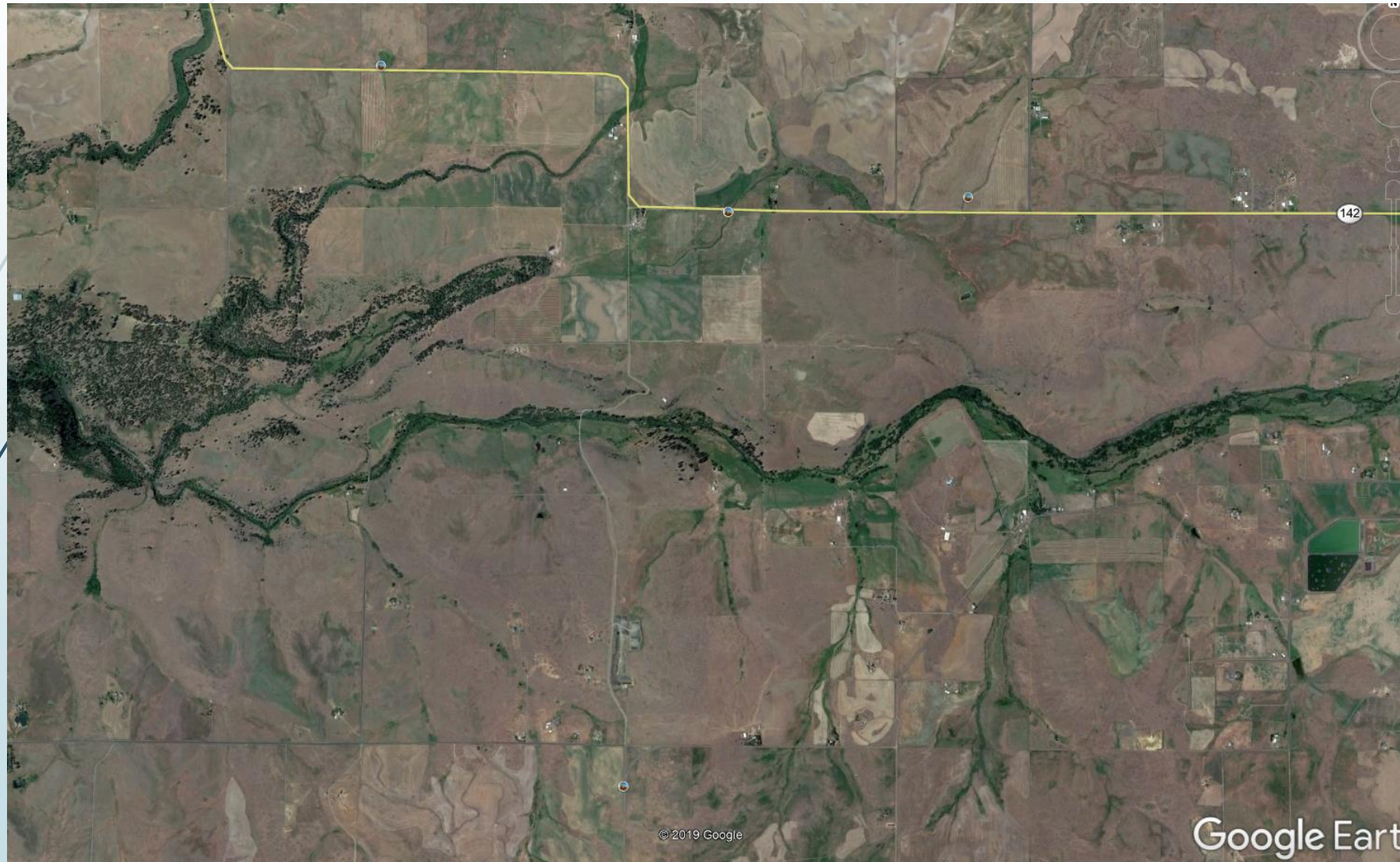
Shoreline Environments



Shoreline Environments

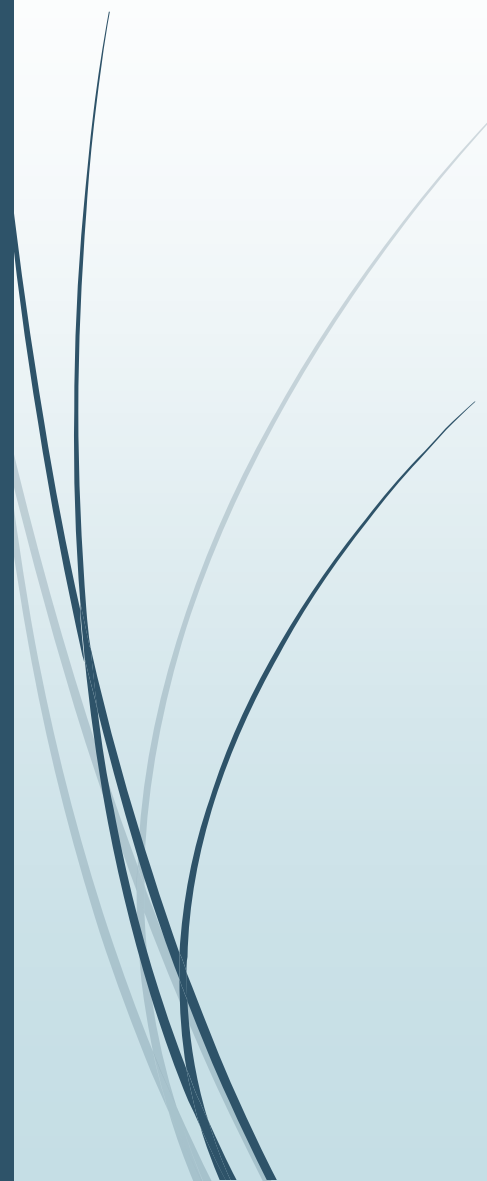


Shoreline Environments





Permits

- ▶ Exemptions
 - ▶ Substantial Development
 - ▶ Conditional Use
 - ▶ Variance
- 



If in the shoreline.....

- **Contact the County Planning Department**

- Prior to any development, construction, change in landuse, excavation, fill placement, etc.